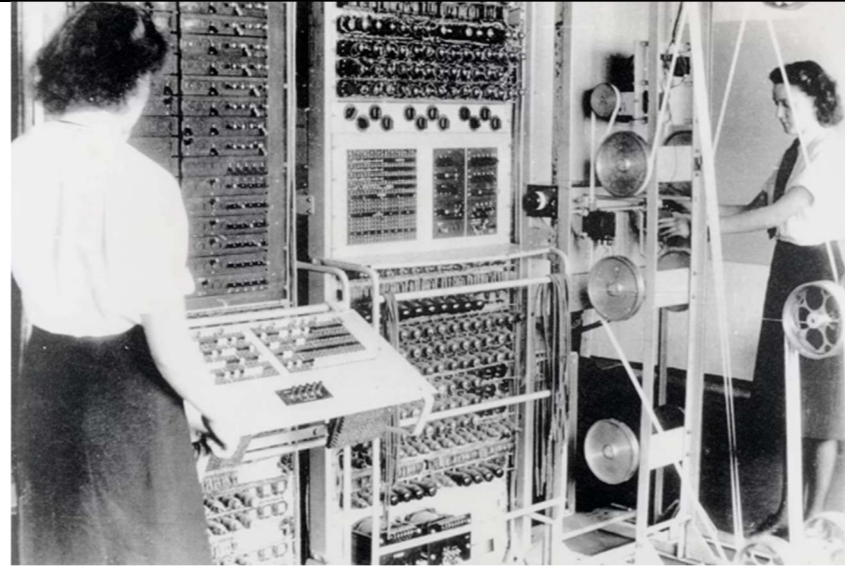


Key Vocabulary

background noise	A (secondary) sound there when your focus is mainly on another (primary) sound.
byte	Made up of 8 bits. One bit contains a single binary value: 0 or 1.
CPU	Central Processing Units are brains of a computer and deal with all the data received from input and output devices as well as running programs.
memory storage	Portable, compact form of digital storage used to transfer files between devices.
radio play	Scripts and text for broadcasting on-air.
RAM	Random Access Memory. Hardware allowing data to be stored in a computer.
trackpad	An input device often found built into laptops. It moves the cursor.

Colossus



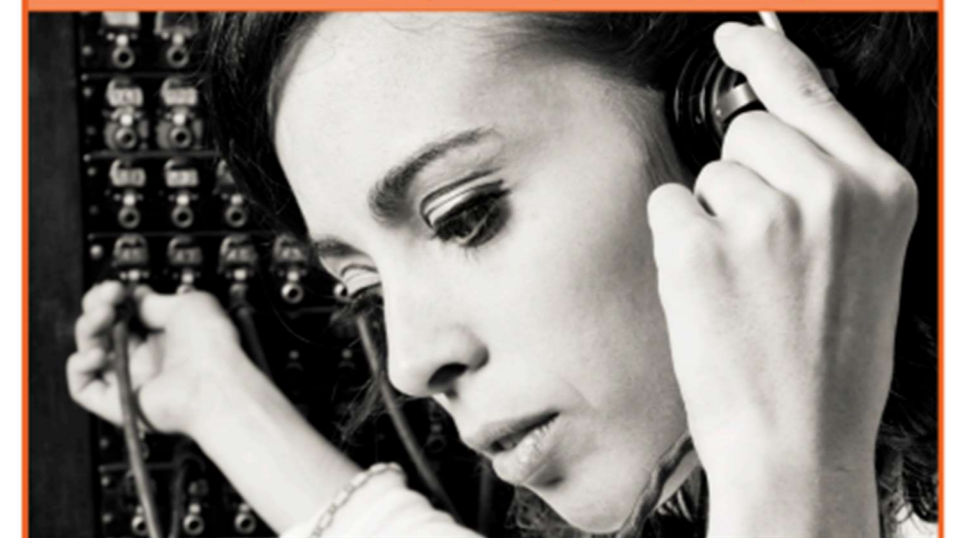
- Tommy Flowers built the Colossus in the 1940s.
- It was the world's first 'proper' computer.
- It could only process simple tasks.
- It was over two meters high, five metres wide and three metres deep.

Key Facts

Bletchley Park and Y Service locations in Britain:

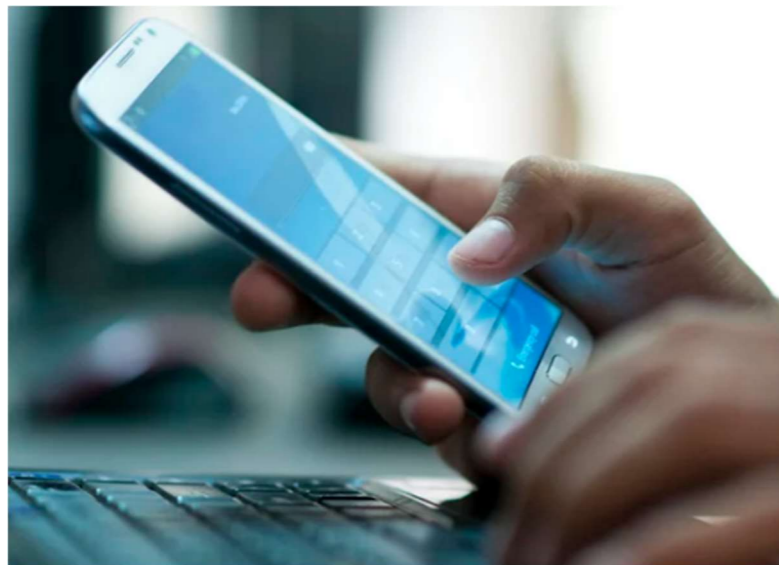


Bletchley Park worked closely with the 'Y Service' of British wireless intercept stations. The operators here would tune-in to enemy radio messages, in an attempt to gain snippets of information, to send back to Bletchley Park for deciphering.



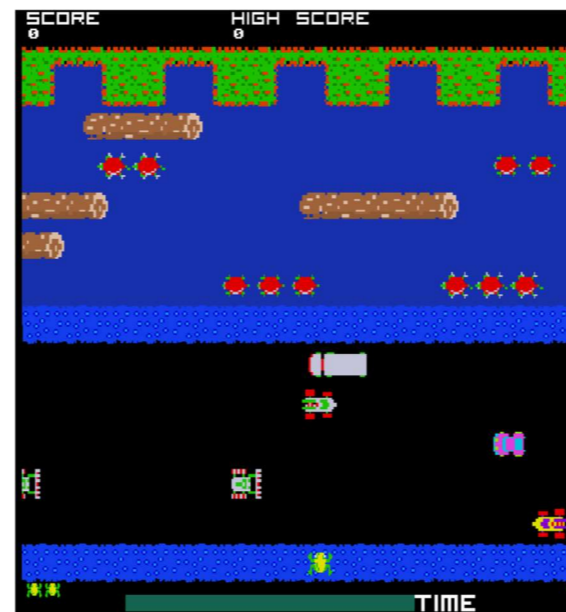
Bletchley Park would have to stitch together the snippets received from the 'Y Service' to decrypt the complete message.

Data



- Current mobile phones often have around 512 GB of memory.
- The first computer to have a hard drive only had 5 MB of memory.

Gaming



- Frogger was an arcade game in 1981.
- What devices are games played on now?

Virtual Assistants

Memory sizes:	Bytes:	Invented:	Abbreviation:
1 kilobyte	1,000	1950	(kb)
1 megabyte	1,000,000	1956	(mb)
1 gigabyte	1,000,000,000	1986	(gb)
1 terabyte	1,000,000,000,000	2007	(tb)